



Pluang Maju Wave Insight

27 September 2024

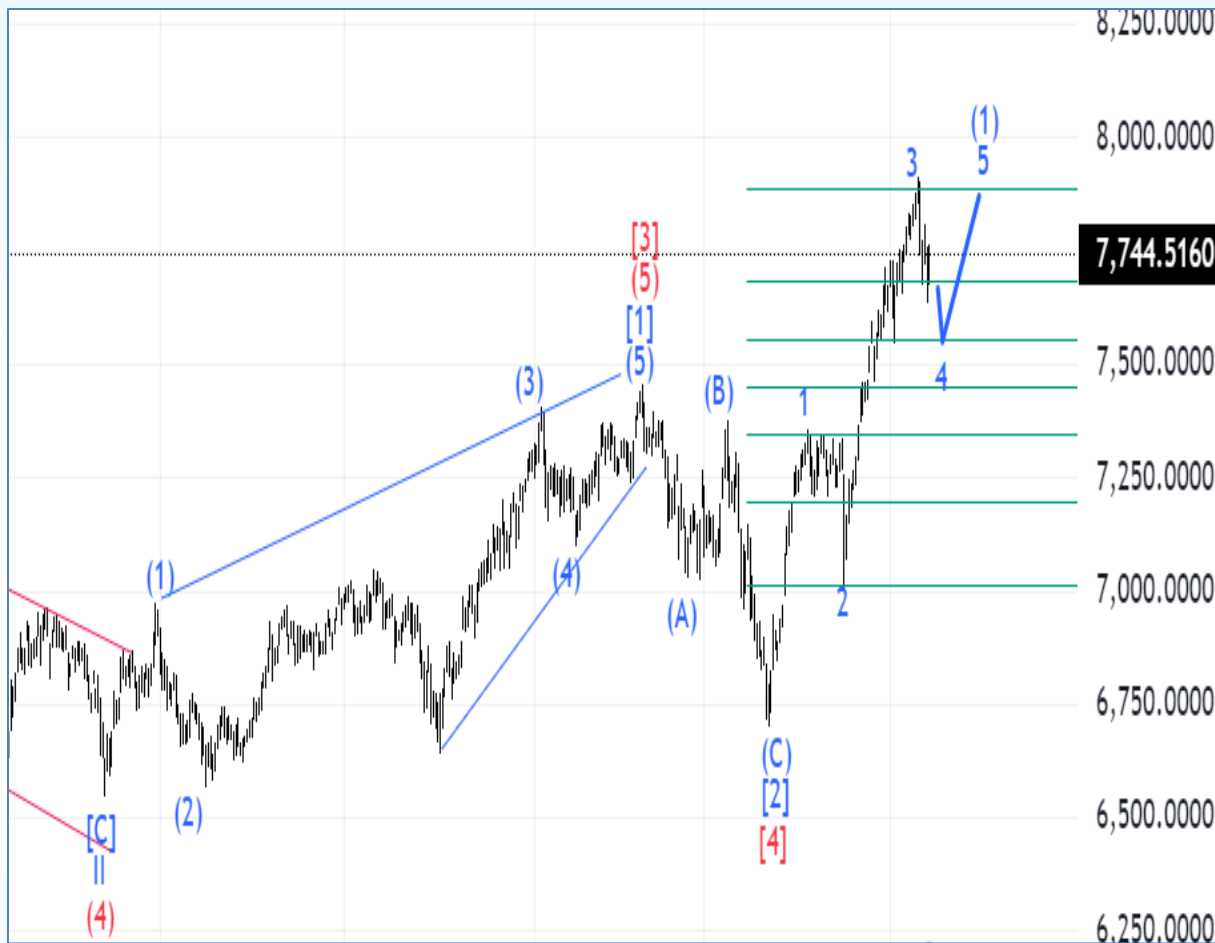


Elliottician Overview

- Jakarta Composite Index *Elliott Wave Perspective*
 - *Short Term View (1-2 days): Bearish*
- *Stocks Recommendation*
 - **INKP**; *Buy On Weakness - Buy area 8300-8475; TP 8900, 9200; SL 8150*
 - **INTP**; *Buy On Weakness – Buy area 6800-6900; TP 7500, 7800; SL 6725*
 - **MDKA**; *Buy On Weakness - Buy area 2530-2570; TP 2750, 2800; SL 2490*
 - **SMGR**; *Buy On Weakness - Buy area 3850-3900; TP 4400, 4600; SL 3800*
 - **MAPI**; *Buy On Weakness - Buy area 1730-1780; TP 1950, 2000; SL 1715*

Jakarta Composite Index

Elliott Wave Perspective



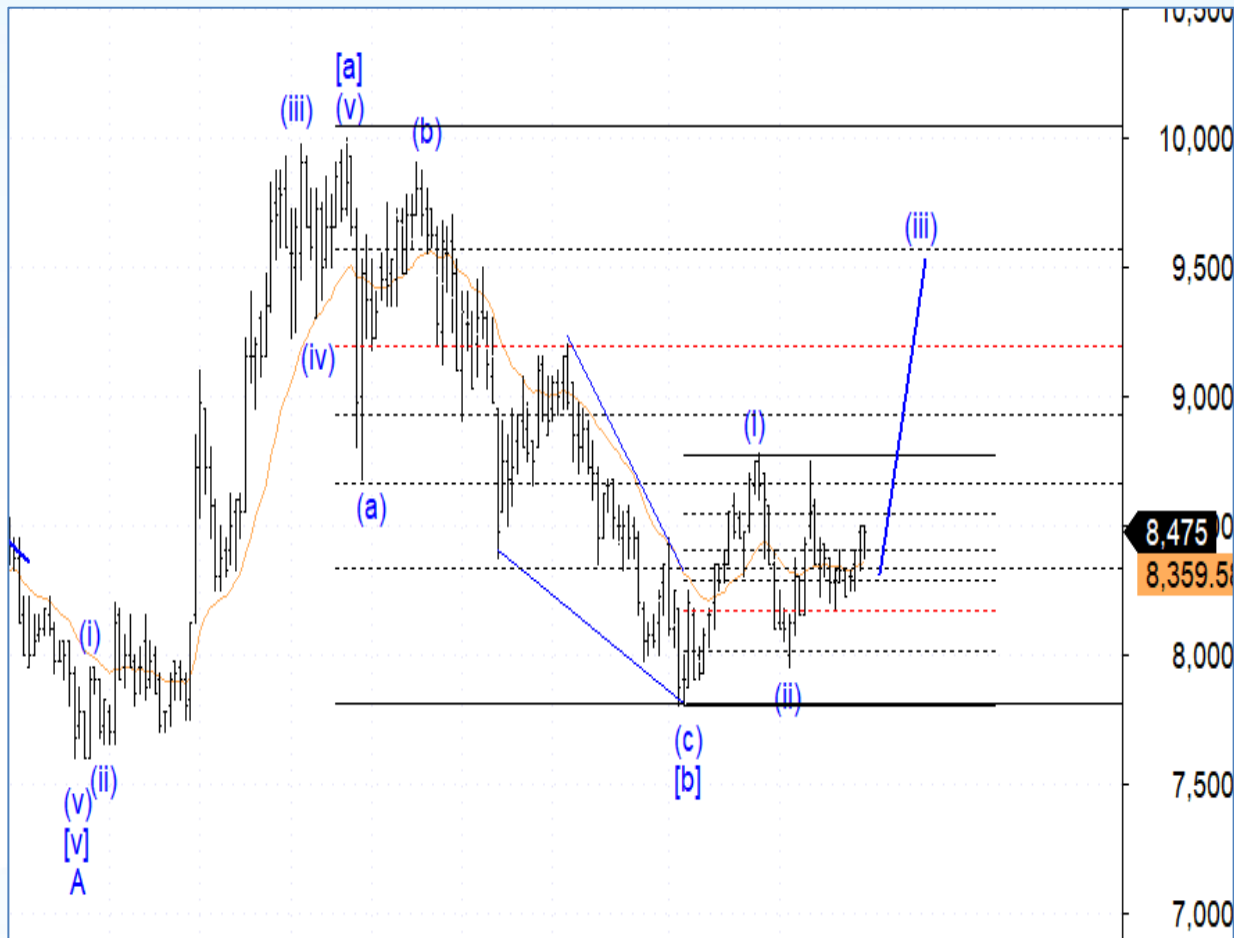
IHSG sudah berada di awal wave [c] dari wave 4 sehingga IHSG berpotensi untuk terkoreksi dengan target ideal di level 7550-7600. Setelahnya IHSG berpotensi untuk kembali menguat ke atas level 7950 kembali dengan membentuk wave 5.

Support : 7670, 7700, 7740

Resisten : 7800, 7820, 7850

Stock Recommendation

INKP; *Buy On Weakness - Buy area 8300-8475; TP 8900, 9200; SL 8150*

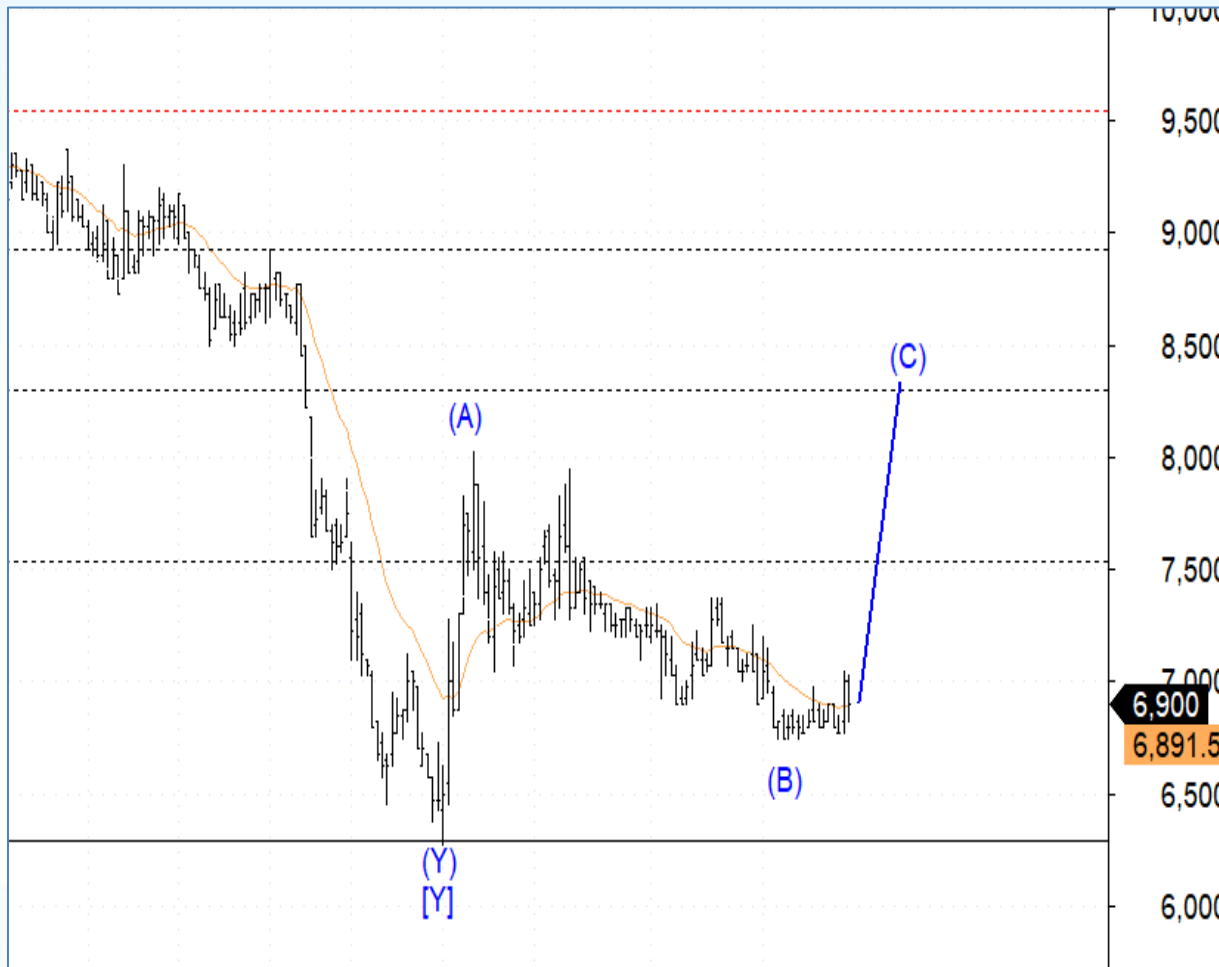


INKP berpotensi sudah berada di awal wave (iii) dari wave [c] sehingga INKP berpotensi kembali menguat dengan target ideal berada di level 8900 dan 9200
Silahkan *buy on weakness* INKP di level 8300-8475 dan batasi resiko apabila INKP ditutup dibawah level 8175 (weekly close)



Stock Recommendation

INTP; *Buy On Weakness – Buy area 6800-6900; TP 7500, 7800; SL 6725*



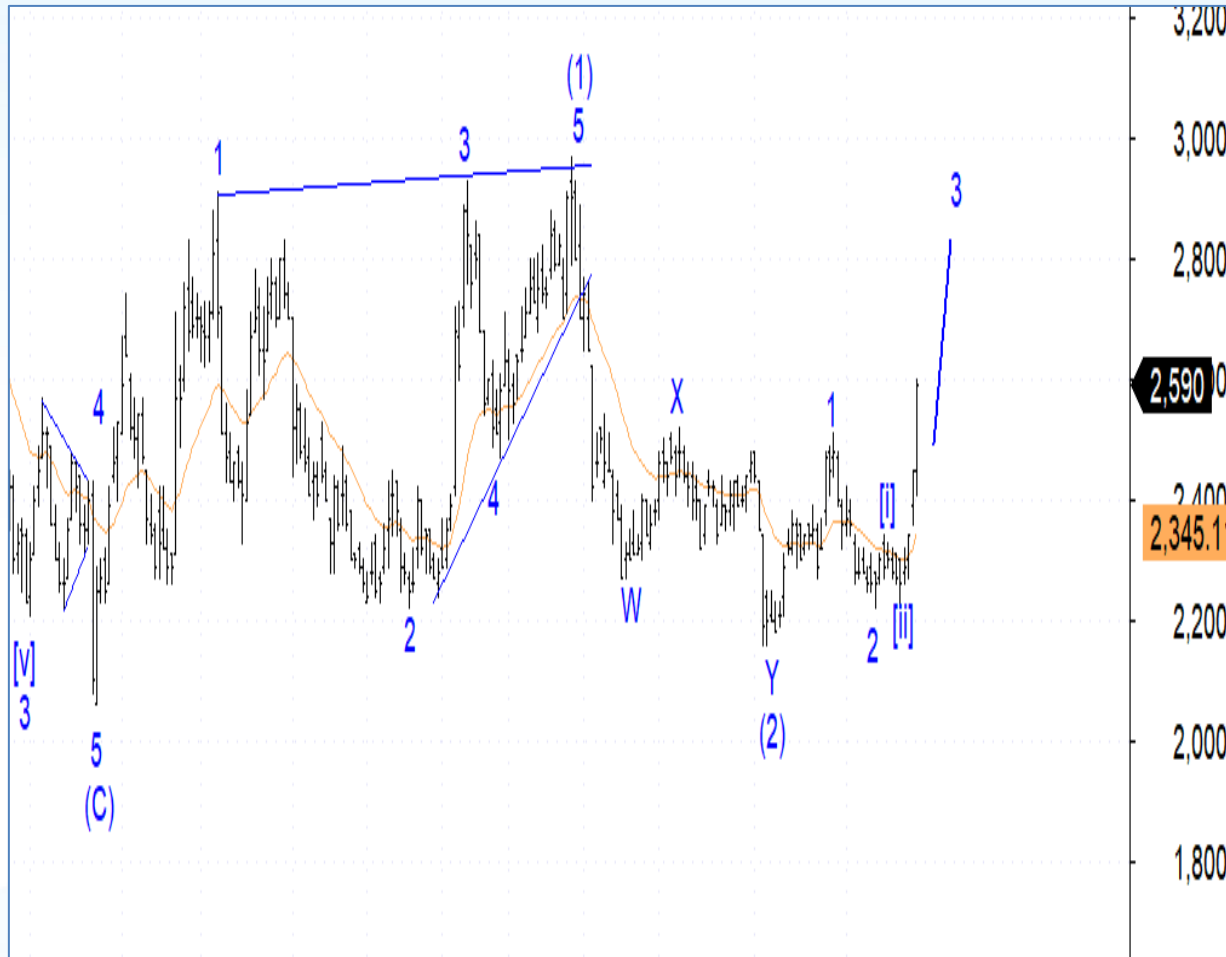
INTP berpotensi sudah berada di awal wave 1 dari wave (C) sehingga INTP berpotensi kembali bergerak menguat dengan target ideal berada di level 7500 dan 7800

Silahkan *buy on weakness* INTP di level 6800-6900 dan batasi resiko apabila INTP ditutup dibawah level 6750 (weekly close)



Stock Recommendation

MDKA; *Buy On Weakness - Buy area 2530-2570; TP 2750, 2800; SL 2490*



MDKA saat ini sudah berada di wave [iii] dari wave 3 sehingga MDKA berpotensi kembali melanjutkan penguatan ke level 2750 atau bahkan 2800
Silahkan *buy on weakness* MDKA di level 2530-2570 dan batasi resiko apabila MDKA ditutup dibawah level 2500 (*weekly close*)

Stock Recommendation

SMGR: *Buy On Weakness - Buy area 3850-3900; TP 4400, 4600; SL 3800*

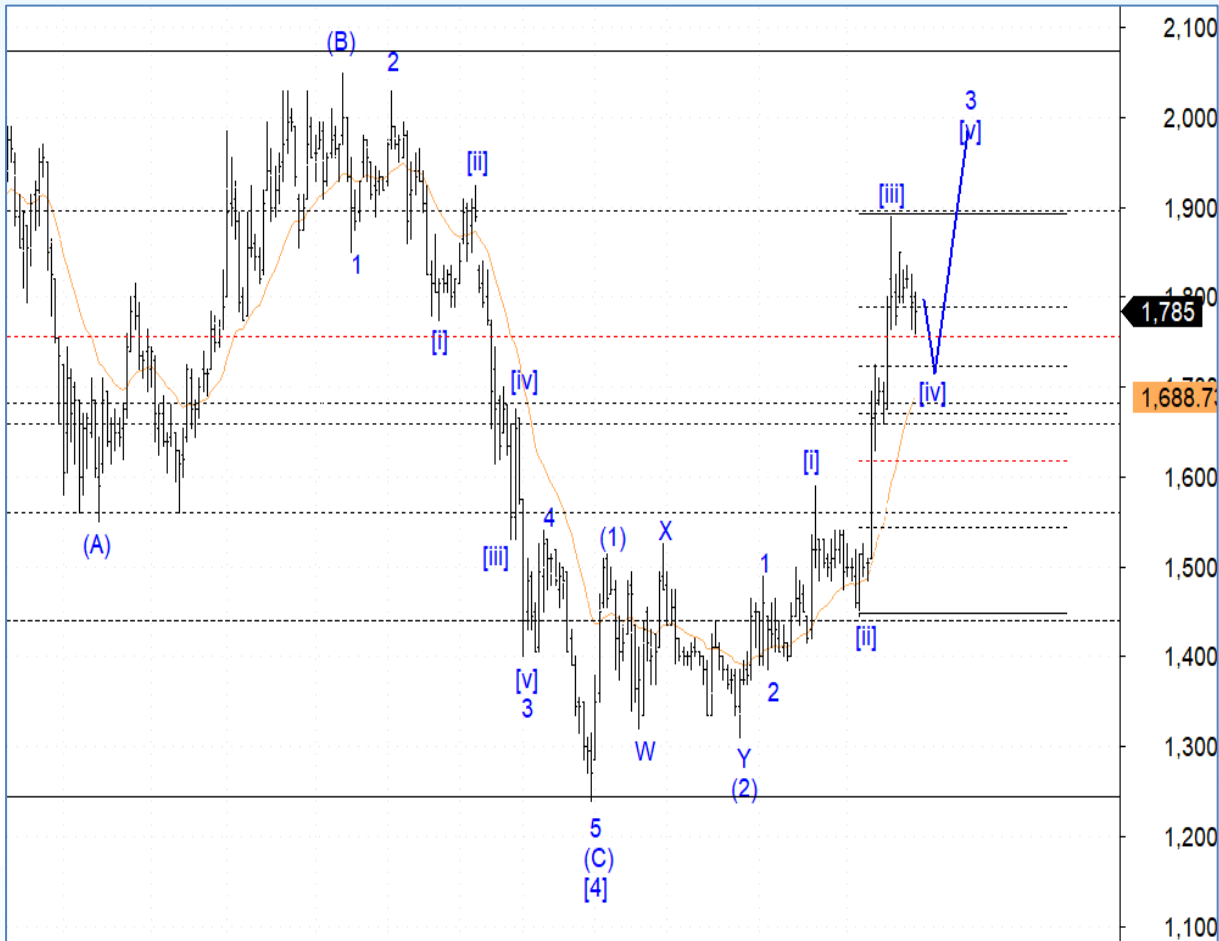


SMGR sedang berada di awal wave [iii] dari wave C sehingga SMGR berpotensi kembali bergerak menguat dengan target berada di sekitar level 4400 dan 4600

Silahkan *buy on weakness* SMGR di level 3850-3900 dan batasi resiko apabila SMGR ditutup dibawah level 3810 (weekly close)

Stock Recommendation

MAPI: *Buy On Weakness - Buy area 1730-1780; TP 1950, 2000; SL 1715*



MAPI berpotensi sudah berada di akhir wave [iv] dari wave 3 sehingga koreksi sudah terbatas dan MAPI berpotensi kembali melanjutkan penguatan dengan target di level 1950 dan 2000
Silahkan *buy on weakness* MAPI di level 1730-1780 dan batasi resiko apabila MAPI ditutup dibawah level 1720 (weekly close)



PT Pluang Maju Sekuritas
Autograph Tower Lt. 39

Jl. MH Thamrin No. 10 Kel. Kebon Melati, Kec. Tanah Abang
Jakarta 10230 Indonesia
Phone. (021) 30265800 (hunting)
Email: info@pluangmajusekuritas.com
Website: www.vintra.co.id

Rating Definitions

- Buy on Weakness (BoW) : We expect this stock could be bought below the last price.
- Trading Buy : We expect this stock could be bought at the last price.
- Sell on Strength (SoS) : We expect this stock could be sold above the last price.
- Trading Sell : We expect this stock could be sold at the last price.

DISCLAIMER

This report was produced by PT Pluang Maju Sekuritas, a member of the Indonesia Stock Exchange (IDX). The Information contained in this report has been obtained from public sources believed to be reliable and the options, analysis, forecasts, projections and expectations contained in this report are based on such information and are expressions of belief only. No representation or warranty, express or implied, is made that such information or opinion is accurate, complete or verified and it should not be relied upon as such. This report is provided solely for the information of clients of PT Pluang Maju Sekuritas who has to make their own investment decisions without reliance on this report. Neither PT Pluang Maju Sekuritas nor any officer or employee of PT Pluang Maju Sekuritas accept any liability whatsoever for any direct or consequential loss arising from any use of this report or its contents. PT Pluang Maju Sekuritas may be involved in transactions contrary to any opinions herein to make markets, or have positions in the securities recommended herein. PT Pluang Maju Sekuritas may seek or will seek investment banking or other business relationships with the companies within this report. This report is a copyright of PT Pluang Maju Sekuritas. For further information please contact our number 62-21-29352788 or fax 62-21-57944095.